

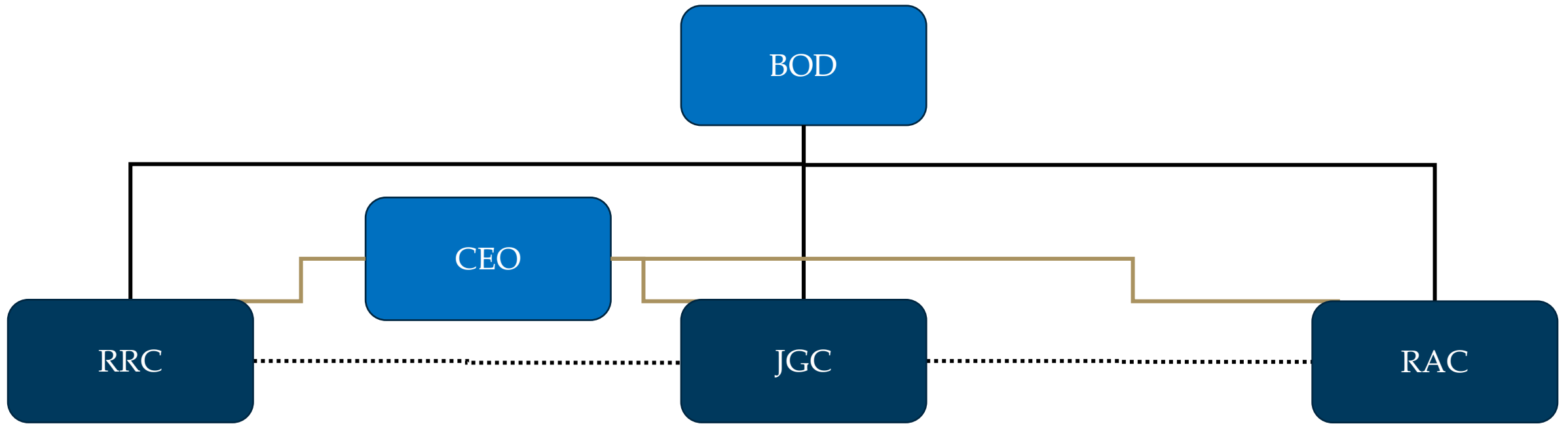


RRC Risk Management Process Overview

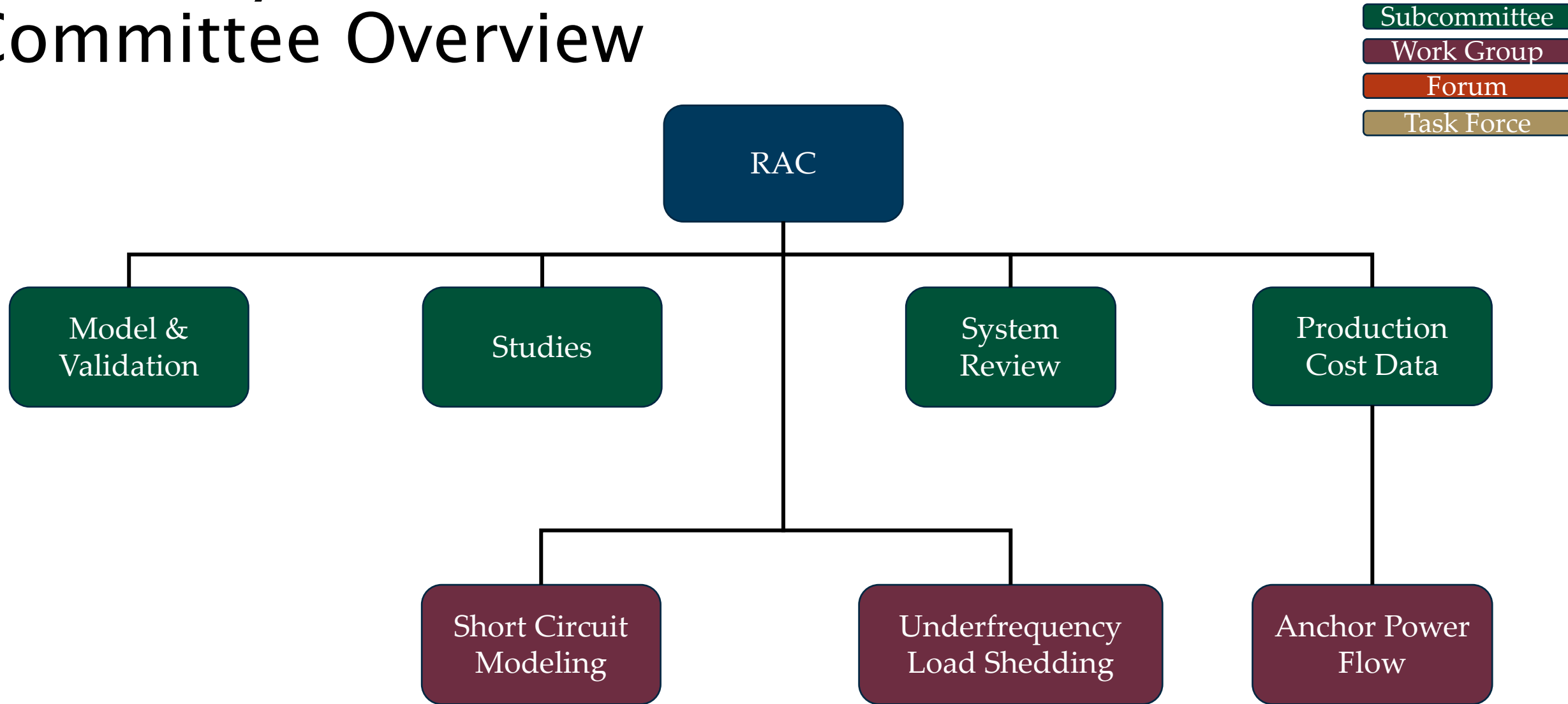
June 24, 2023

Tim Reynolds
Mgr., Risk Analysis

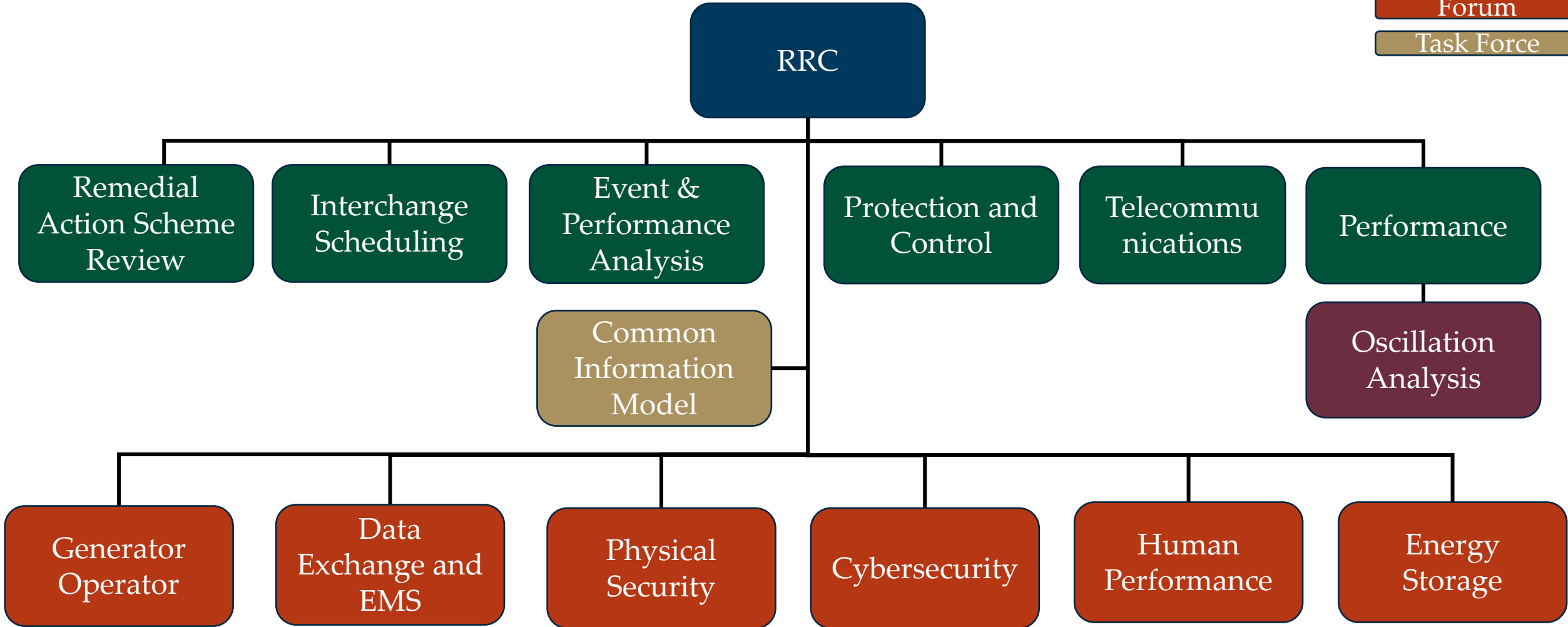
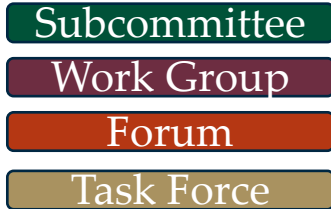
Technical Committee Overview



Reliability Assessment Committee Overview



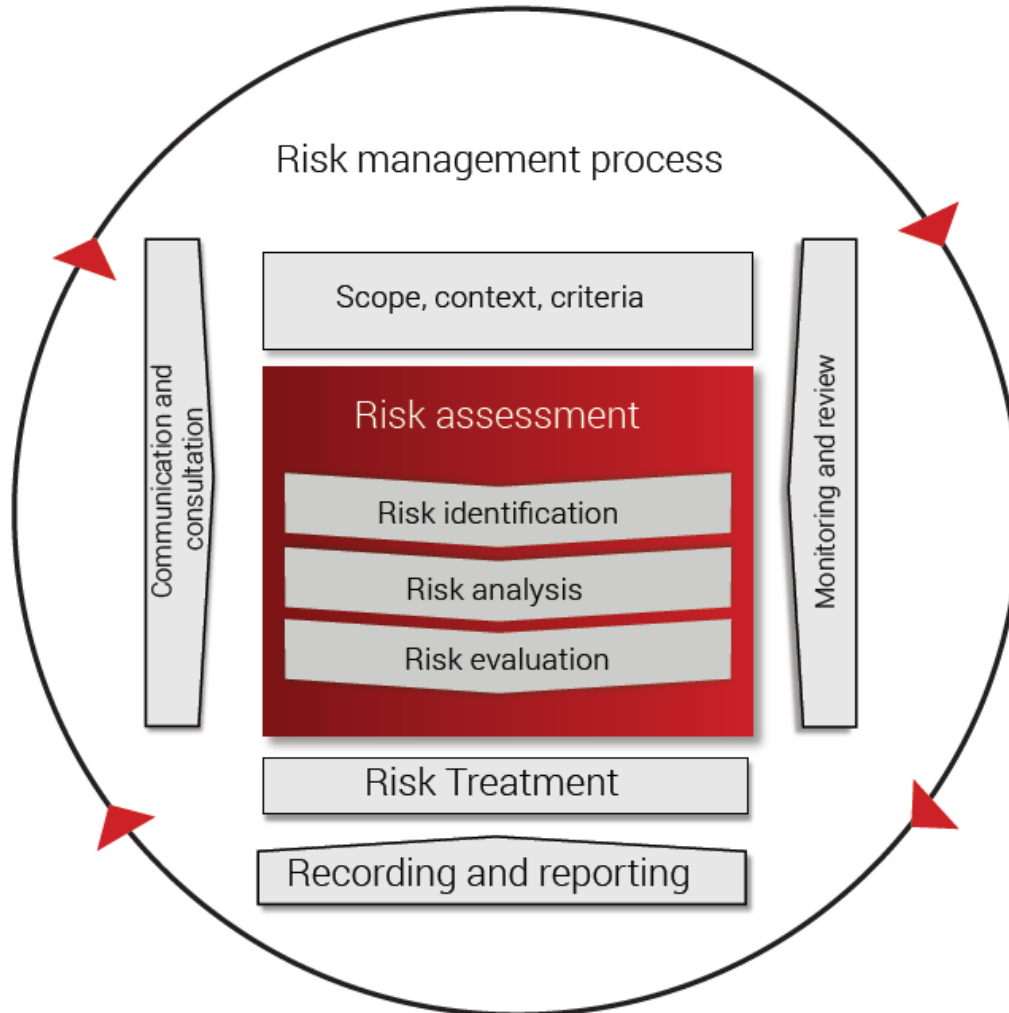
Reliability Risk Committee Overview



RRC Purpose

Identify and address known and emerging risks to the reliability and security of the Western Interconnection.

Risk Management Process



Reliability Risk Matrix						
Consequence/Impact (C)		Likelihood (L)				
		L1	L2	L3	L4	L5
		Very Unlikely	Unlikely	Possible	Likely	Almost Certain
C5	Severe	Medium	High	High	Extreme	Extreme
C4	Major	Medium	Medium	High	High	Extreme
C3	Moderate	Low	Medium	High	High	High
C2	Minor	Low	Low	Medium	Medium	High
C1	Negligible	Low	Low	Low	Medium	Medium

Source: E. LaChapelle, F. Aliu and E. Emini, "ISO 31000:2018 Risk Management—Guidelines," PECB, 2018

So What?

- What does this mean to me?
- Why should I care?

Your engagement and participation in the overall process is critical to its success!

What Can I Do?

- Be a part of the process!
 - Ask the question – “What are the risks that need to be addressed?”
 - Communicate this process – get the word out
 - Submit risks through the process
 - Help submit, analyze, evaluate, and address risks through the RRC Risk management process

How to Find Out More

- RRC Risk Management Process ([Link](#))
 - A living document that outlines the process
 - Will be updated as the process evolves
- Additional supporting documents
 - Risk Registry Initiation Form ([Link](#))
 - Draft Process Flow Diagram ([Link](#))
 - Draft Risk Register ([Link](#))
- ERO Framework to Address Known and Emerging Reliability and Security Risks ([Link](#))



www.wecc.org